

ecoTUNNEL

www.girbau.com

GIRBAU

GROUP

LAUNDRY EQUIPMENT

TBS-50
ECOTUNNEL

High performance batch washer

MAXIMUM EFFICIENCY IN THE WASH

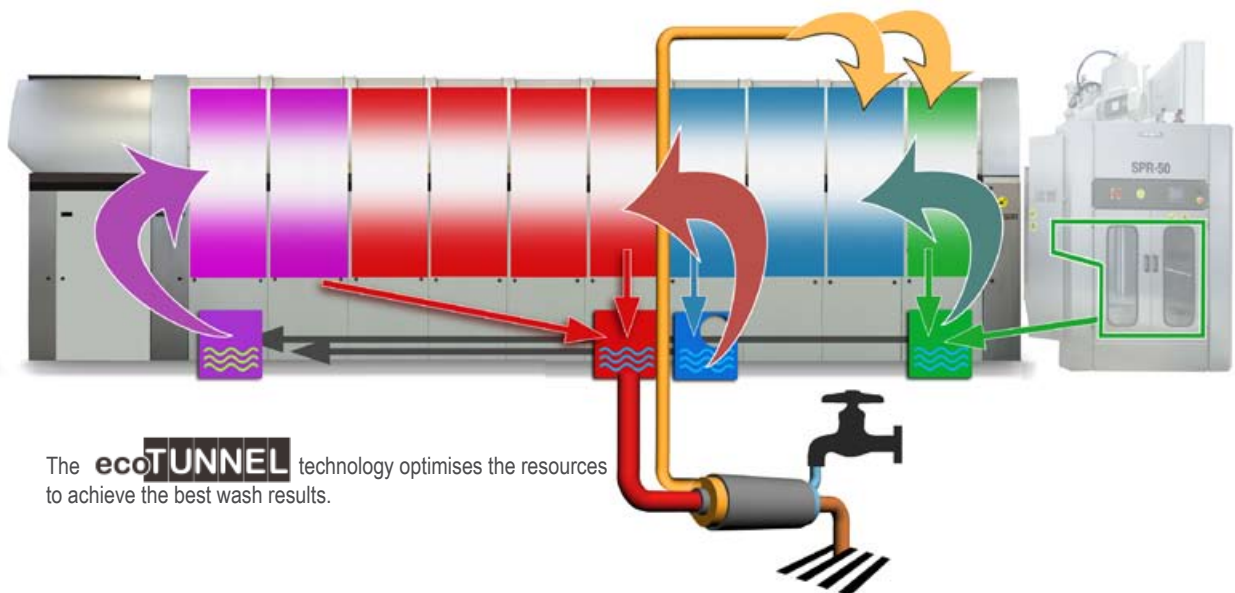
TBS-50 ecoTUNNEL

GIRBAU offers you a complete range of batch washers to meet all industrial washing needs. In this range, the Girbau TBS-50 ecoTUNNEL batch washer has the most advanced features to achieve the highest levels of saving and efficiency.

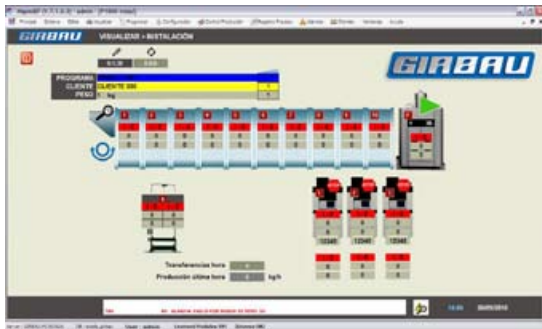


TECHNICAL SPECIFICATIONS

- Available from 5 to 12 modules.
- 4 independent wash phases.
- Water intake and recirculation all controlled from the monitoring PC using inductive flow meters.
- 4 recovery tanks, one of them with self-cleaning rotating filter.
- Independent temperature control in each module, with the corresponding steam intake controlled by solenoid valve.
- Temperature control in the pre-wash and wash recovery tanks.
- Thermal insulation in all the batch washer modules.
- Temperature recovery (Drain Intercooler) with pumping control.
- Large, pneumatically activated drainage valves (4 inch).
- Stainless steel drain pipes.



The **ecoTUNNEL** technology optimises the resources to achieve the best wash results.



CONTROL

The software, specifically designed for the TBS-50, makes it possible to achieve a precise setting for the number of litres of water per kilo of laundry entering at each phase (pre-wash, wash, rinse and neutralising).

For each cycle, a check is made that the quantity of water used is only the amount programmed, optimising water use. This data is also displayed on the screen to make monitoring easier.

The chemical products are introduced into the different batch washer modules with complete precision, according to the instructions programmed by the user on the PC.



The double outer drum on all modules and the TBS-50 **ecoTUNNEL** software makes it easy to introduce changes and improvements into the wash programs and internal configuration of the batch washer.

The **ecoTUNNEL** has a steam intake in all modules, making it possible to control the temperature throughout the batch washer (even in the rinse).



HYGIENE

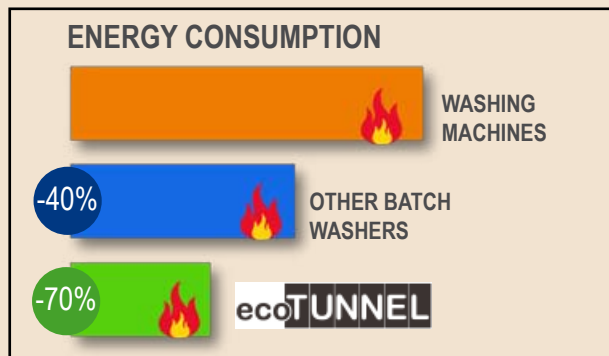
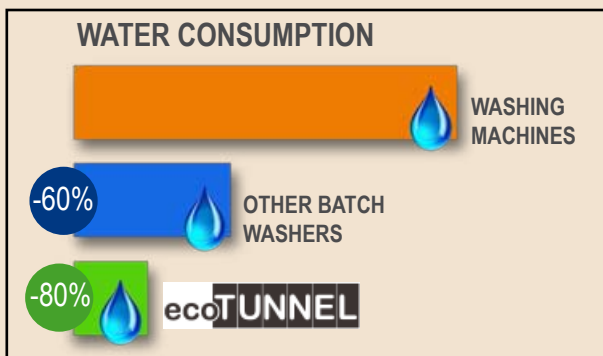
The **ecoTUNNEL** is provided with a thermal disinfection program, ensuring COMPLETE HYGIENE.

TRACEABILITY

Each module has a probe which transmits temperature information to the PC throughout the process. This continuous monitoring and the pH probe and conductivity probe option provide complete traceability.

These parameters are recorded on the PC for each batch of laundry, for subsequent monitoring and/or analysis.

SAVINGS: 80% water consumption, 70% energy, 40% detergents, 100% labour.



EFFICIENCY

- The DRAIN INTERCOOLER recovers the temperature of the drainage water preheating the incoming water, saving more than 30% of the energy used in the batch washer.
- Minimum space between the inner drum and the outer drum to minimise the quantity of “unused” water.
- Thermal insulation in all modules, to minimise energy loss.
- Steam intake direct to the bath.
- NTC temperature probes inserted in each outer drum for precise temperature monitoring of each module.

VERSATILITY

Basic configuration + accessories and extras for complete adaptation to the customer’s particular needs and/or wash process. Great flexibility and facility for changing the process, altering configurations etc. if the wash process is changed, introduction of new processes, change in detergent use system etc. Outer drum in all modules, infinite possibilities in all modules, complete thermal disinfection in the batch washer.

WHY CHOOSE A GIRBAU TBS-50?

Because not all batch washers are the same. Girbau has taken care of every detail to achieve the most efficient batch washer possible.

We can sum it up in 10 points:

1.- COMPATIBLE WITH ALL WASH TECHNOLOGIES

ALL MODULES IDENTICAL. ALL WITH OUTER DRUM:

Great flexibility and very easy to change the process, alter configurations, bring in new processes, change the detergent use system, etc.

2.- UNBEATABLE AT HANDLING LAUNDRY:

Central laundry transfer prevents the laundry rubbing up against the walls of the batch washer, avoiding the washing tangles typical of other batch washers. High-quality finish inside providing a standard of laundry handling unique in batch washers.

3.- THE BEST MECHANICAL ACTION

Applying the right mechanical action to the laundry makes it possible to reduce water and detergent consumption and cut wash temperatures and times.

LARGER INNER DRUM VOLUME

SPECIFICALLY DESIGNED WASH BEATERS

ADJUSTABLE MECHANICAL ACTION

4.- SIMPLICITY / COMPACT DESIGN.

THE MOST COMPACT: The most compact 50kg-capacity batch washer. Just 2.7m high, making it a solution for small spaces.

CONFIGURABLE: Girbau has countless accessories and extras so that the 3 basic available models

– **MULTI, HYGIEN** and **ECOTUNNEL** – can be best adapted to your needs.

MONO-BLOCK BATCH WASHER: Minimum number of mechanical components, fewer sensors, less maintenance and simpler control.

5.- HYGIENE and DISINFECTION

Possibility of having an independent steam intake in each module.

Possibility of up to 4 different chemical product intakes in each module.

Automatic batch washer disinfection program.

6.- NO JAMS.

The position of the beater at the top during washing offers great security against laundry jams.

BEFORE each transfer, the STATE OF THE LEVEL PROBES and THE WATER LEVEL is checked in each module, to ensure the success of the transfer. The TBS-50 lifts the laundry during transfer, giving it a great impulse that ensures it moves across, minimising the risk of jams.

7.- GIRBAU REMOTE SUPPORT

Your peace of mind is the most important thing. That is why we equip our batch washers with a system allowing the Technical Services to diagnose and resolve incidents in batch washers, presses and dryers over the Internet.

8.- EFFICIENCY.

The TBS-50 incorporates the latest technological advances for getting the most from the resources used (water, energy and chemical products).

9.- COMPONENT QUALITY.

All parts and components have been carefully selected and tested in our laboratories before being used in our machines.

10.- CUSTOMISED, COST-EFFECTIVE DESIGN.

The configurability and the large number of TBS batch washer options mean it can be adapted to all needs, without sacrificing any features or paying for features that will not be used or will not be cost-effective.



HEADQUARTERS

GIRBAU, S.A. Ctra de Manlleu, km. 1 - 08500 Vic (Barcelona) Spain - www.girbau.com
tel. (+34) 93 886 2219 - Fax (+34) 93 886 0785 - sales@girbau.es

BRANCHES

Argentina - Buenos Aires - Tel. +54-1 149017600 - girbauargentina@girbau.com.ar

Brazil - Sao Paulo - Tel. +55 11-29820446 - girbaudobrasil@girbau.com.br

China - Shenzhen - Tel. +86-755-8211 1330 - info@girbau.com.cn

Cuba - La Habana - Tel. (+53-7) 8662071 al 73 - girbau@girbau.co.cu

France - Roissy (Paris) - Tel. +33 1-49388585 - info@girbau.fr

Germany - Hannover - Tel. +49-5119357570 - girbau@girbau.de

Italy - Venezia - Tel. +39 335 7294655 - mscatto@girbau.com

U.A.E. - Dubai - Tel. +971 4-8839951 - sales@girbau.ae

U.K. - Hitchin - Tel. +44(0)-1462 427780 - info@girbau.co.uk

U.S.A. - Oshkosh, WI - Tel. +1(920) 2318222 - info@continentalgirbau.com