

www.girbau.com

GIRBAU

LAUNDRY EQUIPMENT

PC-120
FLATWORK IRONER
High performance for the industrial laundry

FLATWORK IRONER
ADVANCES IN IRONING TECHNOLOGY

PC-120



More than 35 years experience manufacturing flatwork ironers has allowed us to evolve our range creating the most advanced flatwork ironer on the market, offering significant advances in control, efficiency, performance, durability and low maintenance costs.



UNRIVALLED IRONING QUALITY

The painstaking finish to all the elements that make up the PC-120, along with the cutting-edge electronics, provides absolute control over all the ironing parameters. The result is a perfect balance ENSURING CONSISTENTLY SUPERIOR IRONING QUALITY.

7 YEAR GUARANTEE

GIRBAU's priority is quality. Our commitment to quality is total, our quality control department checks every component at every stage of manufacture and assembly. The result is a product that is unique in the market offering long life and total reliability.

This commitment to quality enables us to offer a guarantee of up to **7 years***.

* Consult the guarantee conditions at www.girbau.com/warranty





EFFICIENCY

Wide diameter fluid ducting and materials with high heat conductivity ensure a perfect transmission of heat to the linen.

VERSATILITY

Girbau has steam, thermal oil and gas versions available, in order to adapt to the needs of all clients.

CONFIGURABILITY

Versions with 1, 2 or 3 rollers, and widths of 3, 3.3 and 3.5 metres allow the PC-120 to adapt to every ironing requirement.

SAFETY

All Girbau machines comply with the highest safety requirements:

- 2006/42/CE Directive on Machine Safety
- 2006/95/CE Directive on Low Voltage
- 2004/108/CE Directive on Electromagnetic Compatibility
- 97/23/CE Directive on Equipment and Pressure
- 90/396/CEE Directive on Gas Appliances



TECHNOLOGY

CONTROL

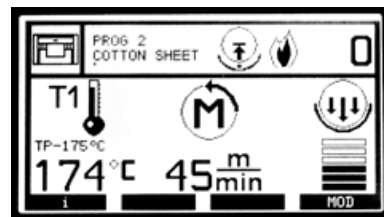
The INTELIgent evolution



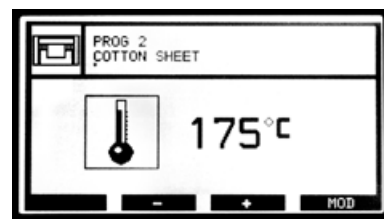
One of the major advances that the new PC-120 incorporates is INTELI control. This control system, already tried and tested with excellent results in our range of washing machines, allows all the ironing parameters to be controlled conveniently and precisely:

- Ironing speed.
- Temperature of each bed.
- Consumption of the motor for each roller.
- Ironing pressure.
- Speed differences between rollers.
- Oil temperature (model with built-in boiler).
- Temperature of the boiler exhaust (model with built-in boiler).

In addition, INTELI allows you to save up 49 different ironing programs in order to adapt the machine instantly to the various products and qualities required in the laundry



Main screen



Temperature selection screen



Ironing pressure adjustment screen



Program selection screen

TRANSMISSION: MAINTENANCE-FREE

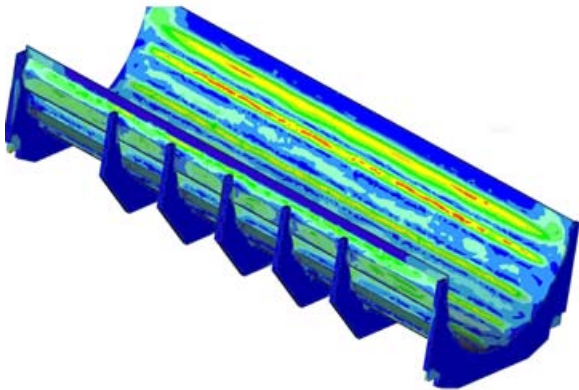


The movement of the rollers on the new PC-120 is performed using high-performance planetary reduction motors that are low-maintenance and resistant to high temperatures.

The reduction motors transmit the power to each roller independently and are electronically controlled using the very latest encoders and inverters.

Connected through a network of communications, they are synchronised, performing a perfect mechanical transmission. In this way belts, pulleys, chains and greasing are eliminated, and the maintenance and the risk of breakdowns is reduced.

TECHNOLOGY



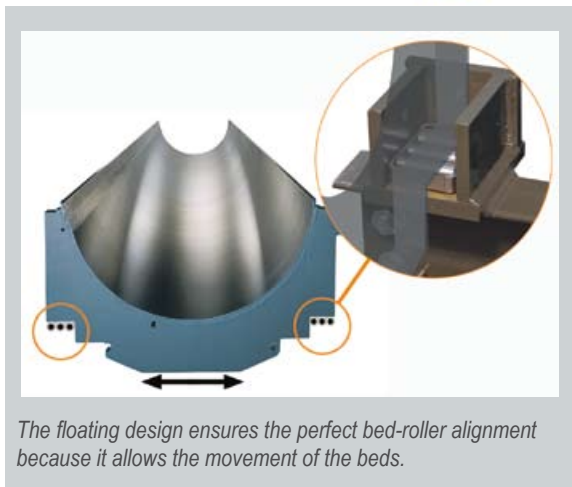
THE BED: DURABILITY AND PERFORMANCE

The PC-120 beds have been designed three-dimensionally, applying parametric simulation technology to obtain a bed with an extensive fluid passage and optimum capacity for transmitting heat to the linen, enabling ironing at high speeds with the highest quality.

The S-COIL design of Girbau beds ensures uniform heating of the entire ironing surface and the elimination of cold areas.

Our beds are machined after welding, and then tested to a pressure of 20 bars and are given a final "mirror finish" polishing to obtain an excellent ironing result.

In addition, they comply with the directive on equipment under pressure and the strictest safety standards.

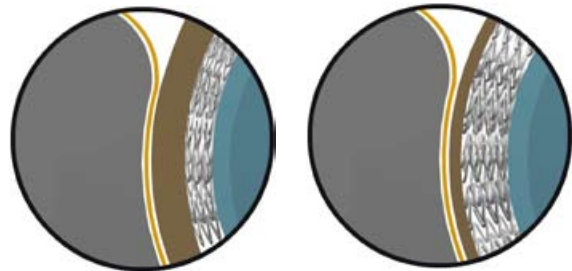


The floating design ensures the perfect bed-roller alignment because it allows the movement of the beds.



UNIFORM IRONING PRESSURE

Our flatwork ironers guarantee the ironing pressure across the whole bed run thanks to the flexibility of the padding, and the padding compression capacity of the SPRINGPRESS springs. This continues throughout the life of the padding, as can be seen in the following images:



New padding.
Compressed springs.

Worn padding.
Expanded springs.

ADJUSTABLE PNEUMATIC PRESSURE

All the PC-120 models incorporate a pneumatic supply valve controlled by a microprocessor, which allows the pressure to be varied according to ironing requirements.

Ironing pressure can be configured for each ironing program

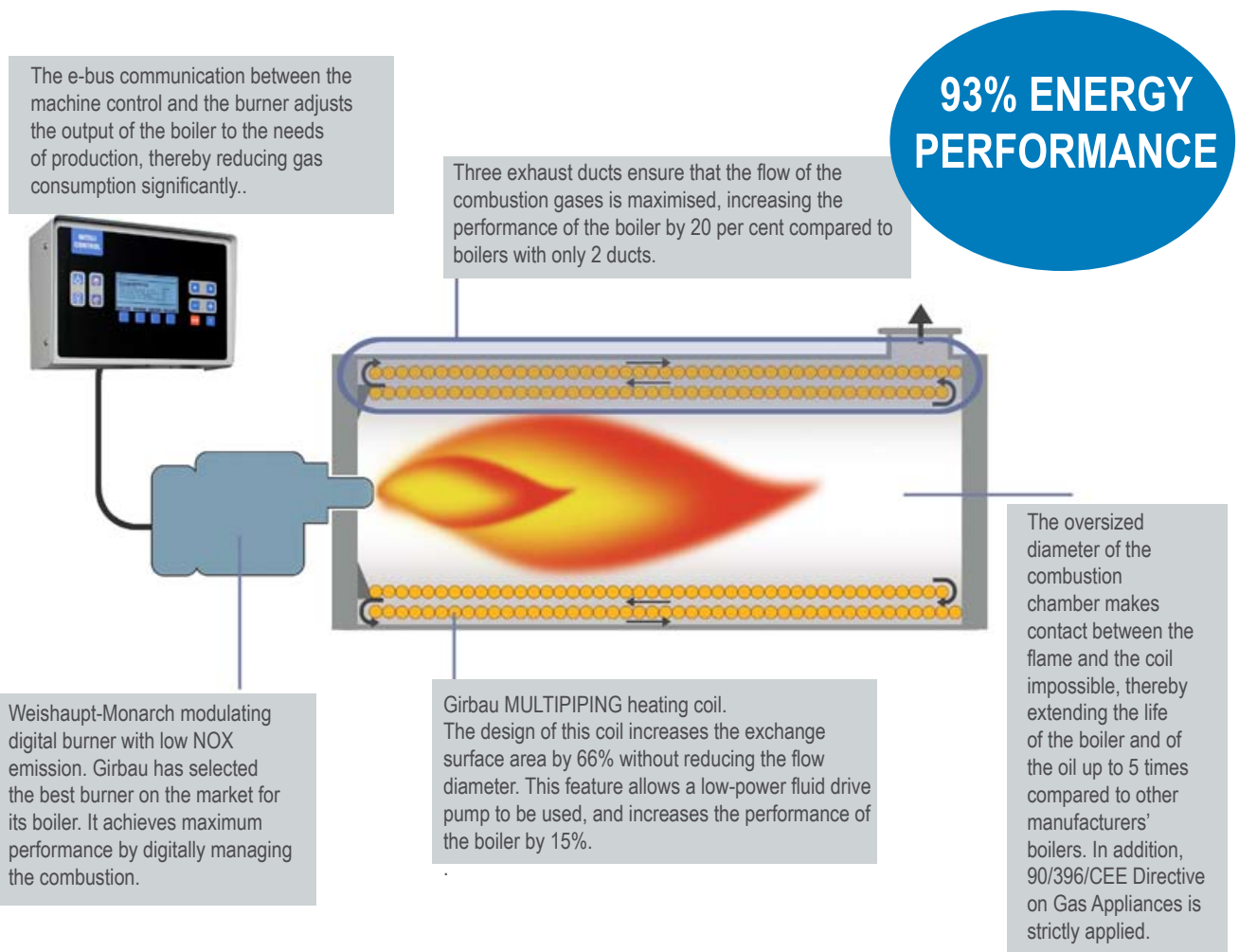
Low pressure	High pressure
<ul style="list-style-type: none"> ■ Longer padding life ■ Less mechanical fatigue ■ Lower motor consumption 	<ul style="list-style-type: none"> ■ Higher quality ■ Greater drying capacity

PC-120 GAS

Flatwork ironer with built-in heating

GIRBAU flatwork ironers with built-in heating represent the greatest achievable level of ironing efficiency and performance. In the PC-120 GAS, the flatwork ironer incorporates an integral boiler designed exclusively by GIRBAU, optimising fuel consumption adjusting it instantly to the ironing needs in real time, depending upon productivity, speed of ironing, humidity of the linen or the type of linen being ironed.

In addition, by not requiring steam or thermal oil installations, the cost of installation and maintenance are minimised with this ironer.



UP TO 25% LOWER CONSUMPTION



With its exclusive built-in high-performance gas boiler, the PC-120 allows savings of up to 15% of energy consumption compared to flatwork ironers supplied by a conventional external boiler system (steam or thermal oil).

This savings may rise to 25% when compared with other manufacturers' flatwork ironers with low-performance built-in boilers.

For example, a PC-120 GAS with a usable width of 3.3 metres and two rollers can save 40kWh compared to a steam flatwork ironer, and up to 90kWh compared to other brands of flatwork ironers with built-in boilers.

FLATWORK LINE CONFIGURATIONS

The flatwork line consists of a laundry feeder, a flatwork ironer, and lastly, a folder with stacker. There are different configuration possibilities. GIRBAU offers high performance ironing solutions.



DRF
This feeder's versatility ensures that there are no limits in your laundry in terms of feeding.



DRM
A simple manual front feeder that is economical and requires only a minimum of maintenance.

FL-KING



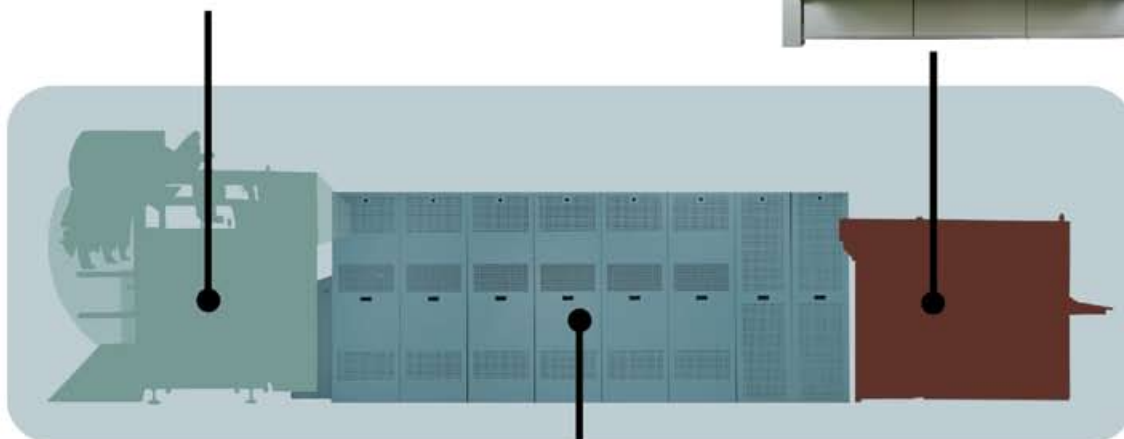
FL-SMART



FL-LITE



FL series
These offer reliability, productivity and the highest quality folding finish. For each type of laundry, Girbau has an FL Series folder that adapts to your requirements.



PC-120
PC-120 GAS
The most advanced flatwork ironer on the market, both in terms of control and efficiency, performance, durability and low maintenance costs.



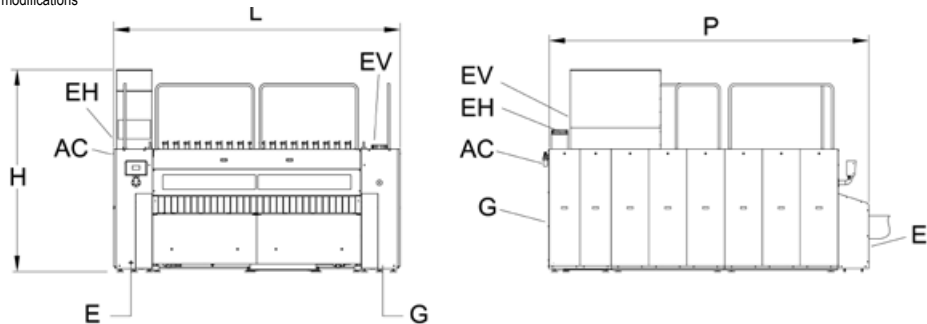
PSN-80
PSN-80 GAS
Quality and productivity in ironing with the maximum energy saving and respect for our environment.

PC-120

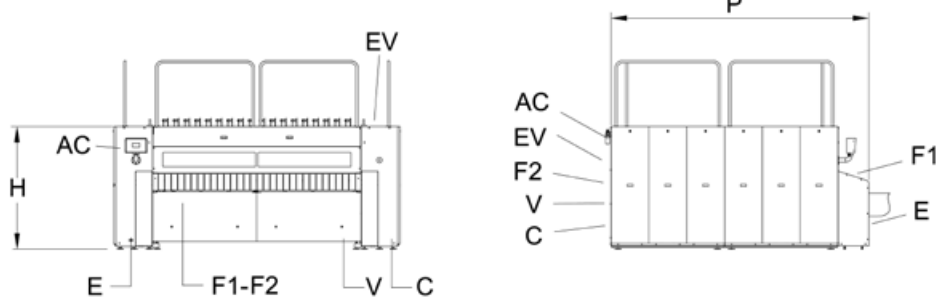
MODEL		PC-12030/1	PC-12033/1	PC-12035/1	PC-12030/2	PC-12033/2	PC-12035/2	PC-12030/3	PC-12033/3	PC-12035/3
Number of cylinders		1	1	1	2	2	2	3	3	3
Heating surface	m ²	5,56	6,12	6,49	13,00	14,28	15,16	20,41	22,44	23,82
Cylinder Ø	mm	1.200	1.200	1.200	1.200	1.200	1.200	1.200	1.200	1.200
Cylinder length	mm	3.000	3.300	3.500	3.000	3.300	3.500	3.000	3.300	3.500
Speed	m/min	5 - 50	5 - 50	5 - 50	5 - 50	5 - 50	5 - 50	5 - 50	5 - 50	5 - 50
EV air flow rate V - AT - G	m ³ /h	1.650	1.650	1.650	3.300	3.300	3.300	5.000	5.000	5.000
Fume flow rate EH - G	m ³ /h	663	663	663	1.325	1.325	1.325	-	-	-
Heating power AT	kW	232	255	270	405	445	470	545	600	636
Heating power G	kW	250	250	250	500	500	500	-	-	-
Steam consumption	kg/h	423	465	493	735	812	850	995	1.096	1.162
Thermal oil flow rate	l/min	782	860	910	1.365	1.500	1.585	1.840	2.025	2.145
Power of E motors V - AT - G	kW	0,9 / 1,1 11	0,9 / 1,1 11	0,9 / 1,1 11	0,9 / 2x1,1 2x11	0,9 / 2x1,1 2x11	0,9 / 2x1,1 2x11	0,9 / 3x1,1 3x11	0,9 / 3x1,1 3x11	0,9 / 3x1,1 3x11
Power of E motors G (50 Hz)	kW	0,9 / 1,1 11 / 4,6	0,9 / 1,1 11 / 4,6	0,9 / 1,1 11 / 4,6	0,9 / 2x1,1 2x11 / 11,6	0,9 / 2x1,1 2x11 / 11,6	0,9 / 2x1,1 2x11 / 11,6	-	-	-
Steam extraction EV Ø V - AT - G	mm	250	250	250	250	250	250	250	250	250
Fumes extraction EH Ø G	mm	200	200	200	250	250	250	-	-	-
Steam V Ø	(mm)	(38,1-38,1)	(38,1-38,1)	(38,1-38,1)	(50,8-38,1)	(50,8-38,1)	(50,8-38,1)	(50,8-38,1)	(50,8-38,1)	(50,8-38,1)
Return C Ø	inch	1 1/2 - 1 1/2	1 1/2 - 1 1/2	1 1/2 - 1 1/2	2 - 1 1/2	2 - 1 1/2	2 - 1 1/2	2 - 1 1/2	2 - 1 1/2	2 - 1 1/2
Thermal oil F1 Ø	(mm)	(76,2-76,2)	(76,2-76,2)	(76,2-76,2)	(76,2-76,2)	(76,2-76,2)	(76,2-76,2)	(76,2-76,2)	(76,2-76,2)	(76,2-76,2)
Return F2 Ø	inch	3 - 3	3 - 3	3 - 3	3 - 3	3 - 3	3 - 3	3 - 3	3 - 3	3 - 3
Compressed air AC Ø	(mm)	(12,7)	(12,7)	(12,7)	(12,7)	(12,7)	(12,7)	(12,7)	(12,7)	(12,7)
	inch	1/2	1/2	1/2	1/2	1/2	1/2	1/2	1/2	1/2
Net Weight V - AT	kg	5.145	5.750	6.100	10.215	11.370	12.085	15.285	16.990	18.070
Net Weight G	kg	6.470	7.030	7.400	12.358	13.465	14.198	-	-	-
Height H V	mm	1.990	1.990	1.990	1.990	1.990	1.990	1.990	1.990	1.990
Height H G (50Hz)	mm	2.735	2.735	2.735	2.735	2.735	2.735	-	-	-
Height H G (60Hz)	mm	3.055	3.055	3.055	3.055	3.055	3.055	-	-	-
Width L	mm	4.353	4.653	4.853	4.353	4.653	4.853	4.353	4.653	4.853
Depth P V-AT	mm	2.757	2.757	2.757	4.475	4.475	4.475	6.193	6.913	6.913
Depth P G	mm	3.008	3.008	3.008	4.846	4.846	4.846	-	-	-

GIRBAU S.A. reserves the right to introduce modifications

Gas version (G)



Steam version (V)
Thermal Oil version (AT)



HEADQUARTERS

GIRBAU, S.A. Ctra de Manlleu, km. 1 - 08500 Vic (Barcelona) Spain - www.girbau.com
tel. (+34) 93 886 2219 - Fax (+34) 93 886 0785 - sales@girbau.es

BRANCHES

Argentina - Buenos Aires - Tel. +54-1 149017600 - girbauargentina@girbau.com.ar
Brazil - Sao Paulo - Tel. +55 11-29820446 - girbaudobrasil@girbau.com.br
China - Shenzhen - Tel. +86-755-8211 1330 - info@girbau.com.cn
Cuba - La Habana - Tel. (+53-7) 8662071 al 73 - girbau@girbau.co.cu
France - Roissy (Paris) - Tel. +33 1-49388585 - info@girbau.fr
Germany - Hannover - Tel. +49-5119357570 - girbau@girbau.de
India - Bangalore - Tel. +91 80 2521 5725 - info@girbauindia.com
U.A.E. - Dubai - Tel. +971 4-8839951 - girbau@emirates.net.ae
U.K. - Hitchin - Tel. +44(0)-1462 427780 - info@girbau.co.uk
U.S.A. - Oshkosh, Wi - Tel. +1(920) 2318222 - info@continentalgirbau.com